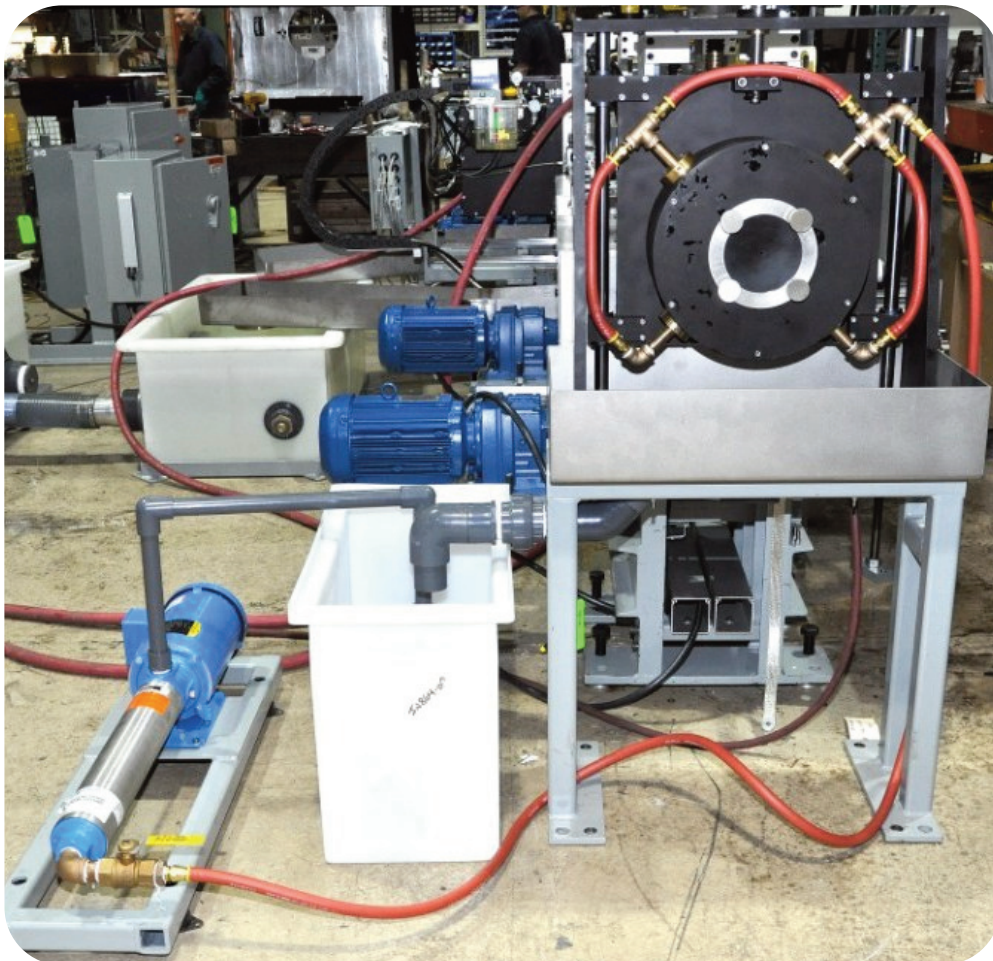


MAC[®] Bar Wash

Prevent False Test Signals from Contaminated Bar & Tube Surfaces & Reduce Rotary Cleaning Downtime.



MAC's Bar Wash Systems

When contaminants such as rust, steel chips, debris, and rolled in scale accumulate on a test product's surface, false test signals can occur.

A Bar Wash unit lowers the number of false signals, reduces downtime for cleaning out rotaries, bearings or other affected parts, and cuts down on the amount of scrap from false signals, especially if the test is running automatically.

Applications

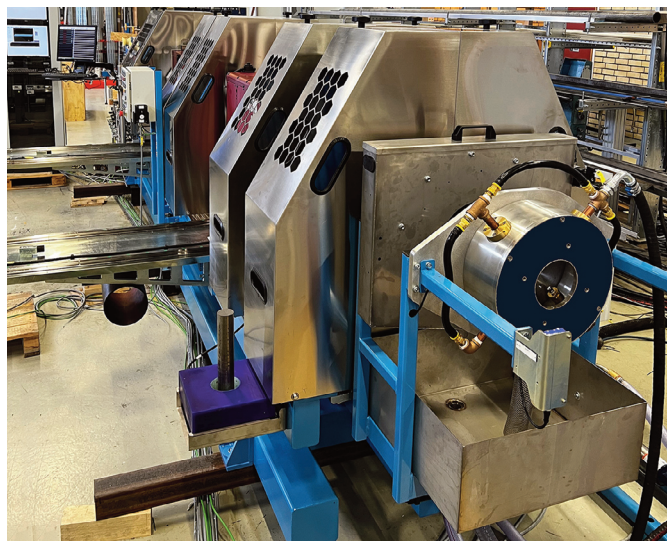
- ❑ Rotary ultrasonic test systems where debris in the water medium interferes with the test results and can also cake up the ultrasonic transducers.
- ❑ Rotary eddy current test systems where noise signals can occur when testing hot rolled bars that have rolled-in scale on their surface.
- ❑ Customer's existing ultrasonic test systems such as ROWA.
- ❑ Installations where fluid from bar straighteners need to be cleaned off before going through an eddy current or ultrasonic rotary.
- ❑ Bars or bundles of bars with rust from having been left outside.
- ❑ Use with Echomac® UT and Rotomac® EC system rotaries.

Description

- ❑ A closed loop recycling water system.
- ❑ Bar wash spray head with 4 air nozzels.
- ❑ 200 psi water pressure pump.
- ❑ 22 gallon stainless steel catch basin
- ❑ Settling tank to collect large particles, where needed.
- ❑ Return tank.
- ❑ Starter/disconnect control panel.
- ❑ Current models can handle up to 0.5" or up to 5" (12.7mm or 127mm) diameter. Other sizes may be available upon request.

Advantages

- ❑ Reduce false test signals
- ❑ Decrease downtime for cleaning out test rotaries, bearings or other affected parts.
- ❑ Reduce scrap from false reject signals



MAC Bar Wash mounted as part of a test system.



MAC Bar Wash spray head

www.mac-ndt.com

Magnetic Analysis Corp.
103 Fairview Park Drive
Elmsford NY 10523 USA



Tel: 800-463-8622 ~ 914-530-2000
Fax: 914-703-3790
info@mac-ndt.com

Bar Wash 6/20233